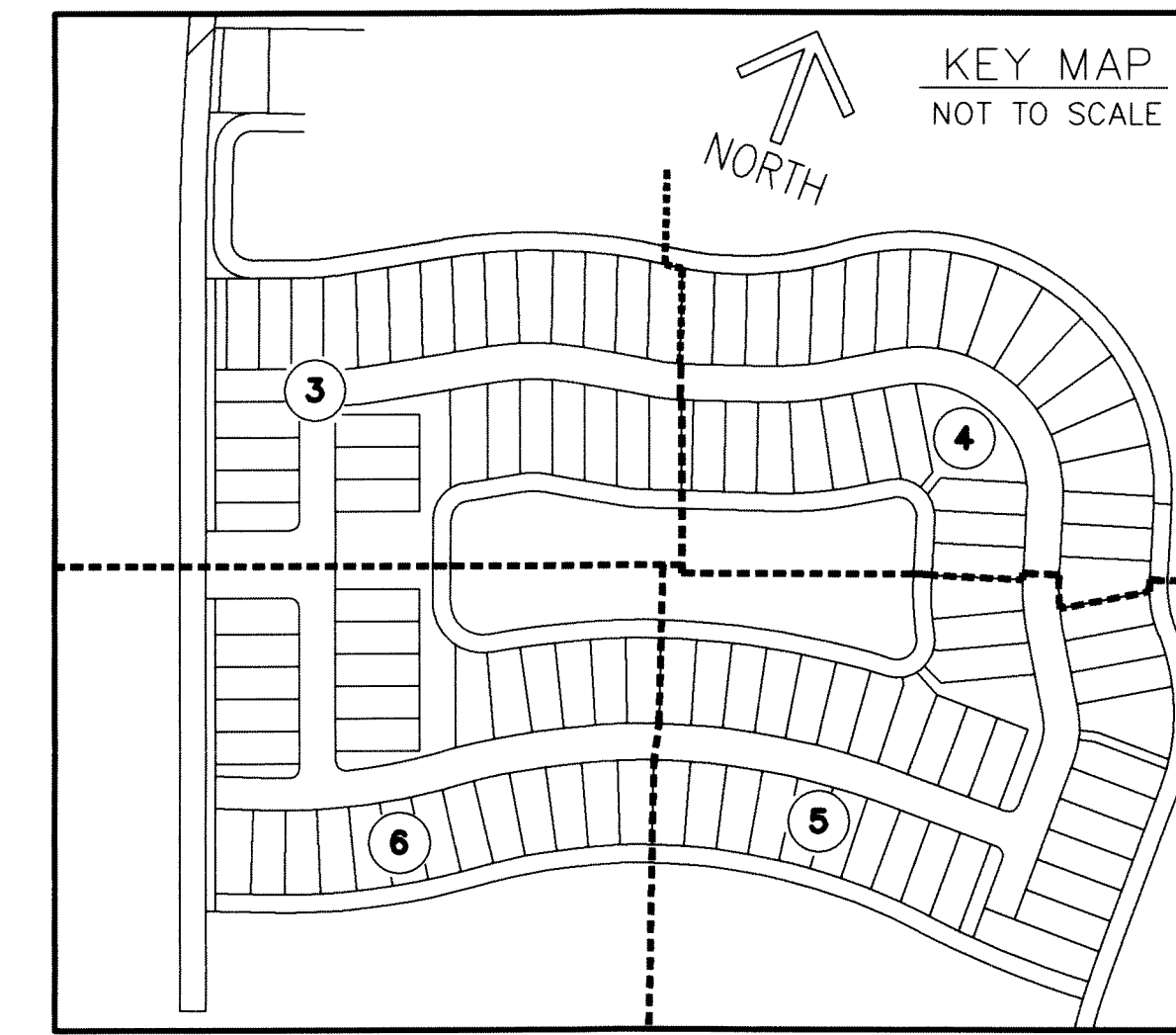


AVENIR - POD 9

THIS INSTRUMENT PREPARED BY
 RONNIE L. FURNISS
 OF
CAULFIELD and WHEELER, INC.
 SURVEYORS - ENGINEERS - PLANNERS
 7900 GLADES ROAD, SUITE 100
 BOCA RATON, FLORIDA 33434 - (561)392-1991
 CERTIFICATE OF AUTHORIZATION NO. LB3591
 APRIL 2022

BEING A REPLAT OF A PORTION OF PARCEL A-2, AVENIR, AS RECORDED
 IN PLAT BOOK 127 PAGE 85, TOGETHER WITH ALL OF TRACT RBE1,
 AVENIR SITE PLAN 3 - POD 8, AS RECORDED IN PLAT BOOK 131 PAGE
 124, ALL OF THE PUBLIC RECORDS OF PALM BEACH COUNTY, FLORIDA
 LYING IN SECTIONS 10 AND 15, TOWNSHIP 42 SOUTH, RANGE 41 EAST,
 CITY OF PALM BEACH GARDENS, PALM BEACH COUNTY, FLORIDA.



SHEET 6 OF 6

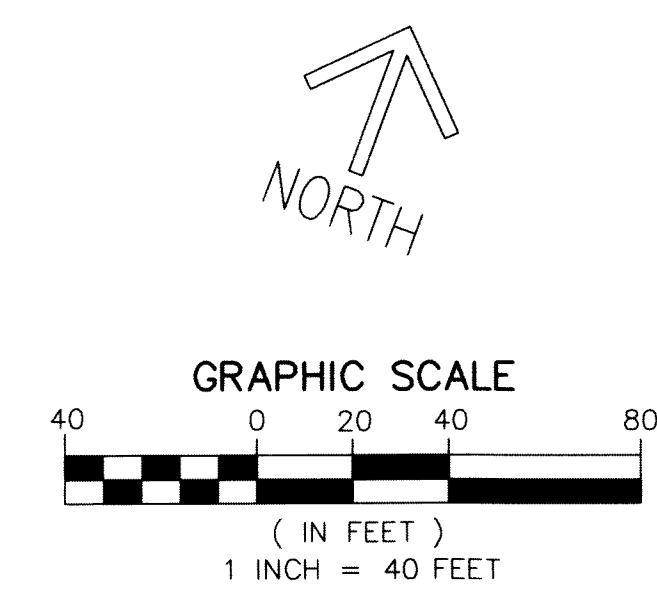
MATCH LINE SHEET 3



MATCH LINE B THIS SHEET

MATCH LINE C THIS SHEET

- LEGEND/ABBREVIATIONS**
- CL - CENTERLINE
 - Δ - DELTA (CENTRAL ANGLE)
 - AC - ACRES
 - CB - CHORD BEARING
 - CD - CHORD DISTANCE
 - DE - DRAINAGE EASEMENT
 - LAE - LIMITED ACCESS EASEMENT
 - LB - LICENSED BUSINESS
 - LBE - LANDSCAPE BUFFER EASEMENT
 - LSE - LIFT STATION EASEMENT
 - O.R.B. - OFFICIAL RECORD BOOK
 - PB - PLAT BOOK
 - PG - PAGE
 - P.P.A.E. - PERPETUAL PUBLIC ACCESS EASEMENT
 - R - RADIUS
 - (R) - INDICATES RADIAL LINE
 - RB - INDICATES RADIAL BEARING
 - RBE - ROADWAY BUFFER EASEMENT
 - SF - SQUARE FEET
 - SUAE - SEACOAST UTILITY AUTHORITY EASEMENT
 - UE - UTILITY EASEMENT
 - PRM - DENOTES PERMANENT REFERENCE MONUMENT
 - 5/8" IRON ROD WITH CAP STAMPED C&W PRM LB 3591
 - - DENOTES PERMANENT CONTROL POINT
 - ▲ - 1/4 SECTION CORNER



MATCH LINE B THIS SHEET

MATCH LINE C THIS SHEET

POINT OF BEGINNING
 THE SOUTHEAST CORNER OF TRACT
 "RBE1" OF THE PLAT OF AVENIR SITE
 PLAN 3 - POD 8, PLAT BOOK 131,
 PAGE 124